

# YOU CAN

Control Your Usage!

A STEP-BY-STEP GUIDE

---


ON READING

---

YOUR ELECTRIC METER

---



A Touchstone Energy<sup>®</sup> Cooperative 

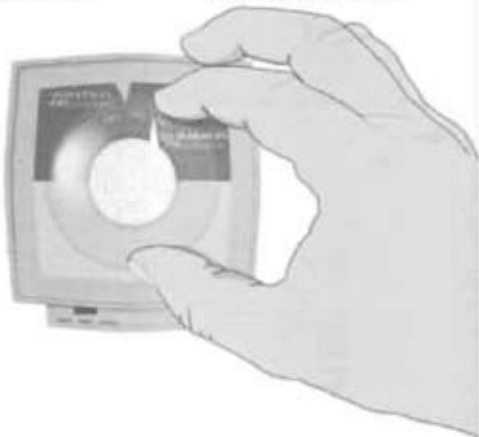
# RECOMMENDED THERMOSTAT SETTING FOR SUMMER and WINTER



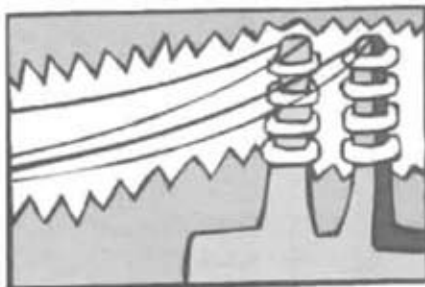
78 DEGREES



68 DEGREES



## DO YOU USE YOUR



## ELECTRICITY WISELY?

Here's a Way to Find Out  
With This Step-By-Step  
Daily Meter Reading Chart

1

2

3

4

## READING YOUR METER DAILY CAN HELP

Why wait until you get your electric bill to learn how much electricity you used? Just by reading your meter once a day or once a week, you will be more aware of the electricity you are using as you use it.

Differences in daily living habits can cause changes in your energy use. By reading the meter daily, a recall of the day's activities can be made, which will show the reasons for the differences in use.

Not only do the every day things you do at home affect the amount of kilowatt-hours use, but other factors such as a change in outside temperature from one day to the next can also cause an increase or decrease in the daily use.

With this meter reading chart, you can become more aware of and monitor activities which affect your energy use.

The electric meter is one of the most accurate instruments known. It measures your electricity much in the same way as a gas pump measures the gallons of gasoline you purchase. You read it from left to right the way you would the speedometer on your automobile.

Daily use totals are figured by subtracting two readings taken on different dates.

## EXAMPLE OF DAILY READING

Simply note the readings as they appear on your meter and subtract to find out exactly how much electric energy is used.



Date read: 5/20



Date read: 5/10

The difference, or use for this meter would be 170 kilowatt-hours.

*If you need any further help,  
call your local electric cooperative.*

## ELECTRIC METER USAGE

WEEKLY USAGE  
TOTALSQUESTIONS TO ASK  
YOUR USAGE

DATE

READING

KWH USED

Were more loads of laundry washed and dried?



Was the weather extremely hot or cold?



Did you use more hot water?



Was anyone home from work on vacation or sick?



Did you have guests stay for a period of time?



OTHER \_\_\_\_\_

MONTHLY TOTAL

